



# CWG COMMERCIAL

HELPING YOU TO BUILD THE FUTURE



**Chigwell**  
**WINDOW CENTRE**  
**COMMERCIAL**  
PART OF THE CHIGWELL GROUP PLC

**Head Office**  
Aaron House, Unit 8,  
Hainault Industrial Estate,  
Forest Road, Hainault  
Essex IG6 3JP  
020 8500 4900

**Manufacturing & Distribution**  
Mia House,  
6 Centurion Park,  
Horsley Cross, Colchester  
Essex CO11 2NZ  
020 8500 4900



**Chigwell**  
**WINDOW CENTRE**  
**COMMERCIAL**  
PART OF THE CHIGWELL GROUP PLC



# CONTENTS

|  |    |
|--|----|
| About us                                       | 03 |
| Our manufacturing facilities & location        | 04 |
| <hr/>  |    |
| Chigwell Window Centre Commercial Case Studies |    |
| Lords View – Landcap                           | 10 |
| Stopher & Sumner House – Etec Group            | 12 |
| Erith – Andersons                              | 14 |
| Blackmore – Andersons                          | 16 |
| Dace Road – Andersons                          | 17 |
| Colchester – Elite                             | 18 |
| West Ham Training Ground – Borrás Construction | 20 |
| Heathrow Airport – Air Canada AQ Cons          | 21 |
| Portsmouth – Etec                              | 22 |
| Mossford – Etec                                | 23 |
| Martham – Elemento                             | 24 |
| Harewood Medical Centre – Hallmark Electrical  | 26 |
| Freya Court – Chigwell Construction            | 27 |
| Treetops School – Net Zero                     | 28 |
| <hr/>  |    |
| Projects at a glance                           | 30 |
| Accreditations & Partners                      | 32 |

Chigwell Window Centre Commercial leads the way in the design, manufacture and installation of quality aluminium and uPVC products.

We offer clients an expert and support that’s tailored to each project, backed by the expertise and technical support from our headquarters in Hainault, Essex.

Quality is at the heart of everything we do – from the curtain walling and window and door systems we fit, to our comprehensive package of technical and design support.

We take pride in understanding each of our clients’ unique challenges and opportunities – and we know how crucial it is to complete a project to the highest standard, on time, every time.

Chigwell Window Centre Commercial is part of the Chigwell Group Plc, a major Brand in the Housing Association, Local Authority sector and Private sectors – with years of experience in manufacturing and installing a range of windows and doors in the residential and trade sectors.

Our expert team are always on hand at every stage of each project to give input in the best way that our products can be utilised.

Because we have our own manufacturing facilities for all our aluminium and uPVC products as well as curtain walling, you can be assured that whatever your requirements CWC Commercial will be able to produce it for you.

All our products are made from quality materials from leading profile manufacturers Smart Systems and Schuco for aluminium and Rehau for our uPVC products.





A huge investment of around £4m for Chigwell Window Centre

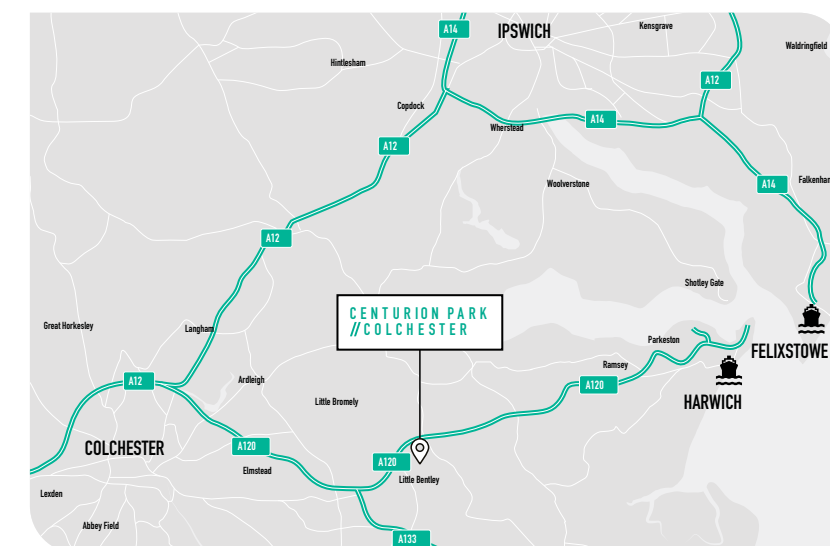
**CWC'S MANUFACTURING FACILITIES, OFFICES & SHOWROOM**

It has enabled the company to bring all its manufacturing and distribution facilities under one roof.

## CENTURION PARK COLCHESTER

### MANUFACTURING FACILITIES, OFFICES & SHOWROOM

Centurion Park is situated directly adjacent to the A120, providing access to the M25 in approximately an hour via the A12, as well as to Ipswich in less than 30 minutes. Colchester City Centre is just 20 minutes away, a thriving centre of commerce, shopping and tourism.



RECEPTION



OFFICES & SHOWROOM 4,094 sq ft



CHARGING POINTS



LOADING BAYS





# BUILT FOR SUSTAINABILITY

Chigwell Window Centre, one of the South East's leading manufacturers and installers of premium home improvement products has moved its entire production and distribution operations to a brand new, and much larger premises in Colchester.

We have employed more staff to meet the increased manufacturing capacity.

41,660 SQ FT

CWC have invested in new state of the art equipment to increase volume and efficiency.





OUR PRODUCTS INCLUDES...

ALL DOOR TYPES: Bifold, Sliding, Heritage, French, Patio, Front & Back & Internal Doors / Screens.

ALL WINDOW TYPES: Casement, Sash, Heritage, Tilt & Turn, Roof Lanterns, Curtain Walling.



OUR NEW MANUFACTURING EQUIPMENT INCLUDES...

Aventek Super Cut 6, Urban Quad Head Welder, Urban Timber Weld,

Fomindustrie 4 Headed Aluminium Crimper, Rotox Fully Automated uPVC Line, Graf Weld Transom Prep Machines, Shuco PGA Aluminium Corner Glue Machines.







Chigwell Window Centre was chosen to supply the windows and doors for this development of four contemporary penthouses, each to benefit from a view overlooking the world famous Lords Cricket ground and a rear view of the City and Regents Park.

Also included in the contract was the complete refurbishment of the entire building with communal works to include replacement of all of the windows and doors.



## LORDS VIEW, ST JOHNS WOOD, LONDON NW8



|                  |  |
|------------------|--|
| Project Value    | £1.3m  |
| Project Duration | 1 year   |
| Scope of Works   | Window & door upgrade replacement to the main building, including the windows and doors to the new penthouses extension Smarts eco-futural aluminium windows, Smarts Visoglide Plus. |



LANDCAP







# STOPHER & SUMNER HOUSE SUMNER ROAD, LONDON SE15



CWC Commercial successfully delivered window and door replacement projects at two residential buildings, totalling 163 flats.

At Stopher House; a full window replacement and at Sumner House, the project involved replacing all windows and balcony doors. This totalled 900 vertical sliding windows across the two sites.

|                  |  |
|------------------|--|
| Project Value    | £1.43m   |
| Project Duration | 6 months   |
| Scope of Works   | Stopher House Window replacement<br>Sumner House Window and balcony door replacement |





Erith Hills is a joint venture between Anderson Group and L&Q Developers. When it is completed in Spring 2026, 849 new homes will have been constructed along with a state-of-the-art eco school which CWC Commercial was heavily involved in the design and development of.

CWC Commercial have been involved from the start of this project supplying the windows, doors, sliding doors and patio doors for Erith Hills.



|                  |  |
|------------------|--|
| Project Value    | £1.4m  |
| Project Duration | Approx 2 years   |
| Scope of Work    | Rehau window and doors<br>c/w acoustic glazing to x500 plots |

ERITH HILLS  
FRASER ROAD  
ERITH, KENT DA8



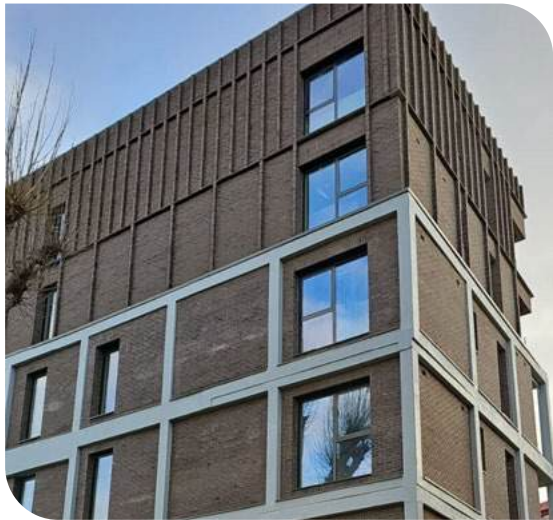


# NINE ASHES ROAD, BLACKMORE, ESSEX CM4

Chigwell Window Centre PLC was chosen by Anderson Group for this exclusive project in Blackmore, Essex. This development features a collection of beautiful 2, 3, 4, and 5-bedroom homes, and Chigwell Window Centre PLC has been involved from the start, supplying and installing casement windows, vertical sliders, bifolds, and front doors.

|                  |   |
|------------------|---|
| Project Value    | £280,000  |
| Project Duration | Ongoing   |
| Scope of Works   | Casement windows, Vertical sliders, Bifolds & Front doors |

## ANDERSON



# DACE ROAD, HACKNEY, LONDON E3

## ANDERSON

|                  |                        |
|------------------|------------------------|
| Project Value    | £280,000               |
| Project Duration | Ongoing                |
| Scope of Works   | Multiple product types |

The regeneration of the Dace Road scheme in Fish Island, Stratford, involves the transformation of a complex site into a vibrant residential and commercial hub.

The development includes 144 apartments across four blocks, comprising 20 affordable units, 90 shared ownership units, and 34 private units. As part of this project, CWC supplied and installed aluminium windows and doors, commercial doors, cladding and pressings, as well as fire-rated windows – contributing to both the safety and contemporary finish of this exciting new community.



# BRENTWOOD CENTRAL, WILLIAM HUNTER WAY, BRENTWOOD CM14

|                  |   |
|------------------|---|
| Project Value    | £290,000.00   |
| Project Duration | Ongoing   |
| Scope of Works   | Supply & Installation grey / white uPVC Windows and doors<br>PPC Commercial aluminium communal Entrance Doors |

Brentwood Central is a £19 million (GDV) residential development by Weston Homes, located in Brentwood.

Chigwell Window Centre PLC has been involved from the outset, supplying and installing high-quality uPVC windows and doors, commercial doors, and AOVs throughout the development.







WEST HAM  
TRAINING GROUND  
RUSH GREEN RD,  
ROMFORD RM7



|                  |   |
|------------------|---|
| Project Value    | £133,000  |
| Project Duration | 8 weeks   |
| Scope of Work    | Windows and doors, Curtain Walling and Brise Soliel |

CWC Commercial was proud to be part of the £5 million redevelopment project to modernise and enhance West Ham United's Rush Green Training Ground first-team facilities.

Chigwell Window Centre PLC supplied and installed all windows, doors, curtain walling, and brise soleil across the new and upgraded areas of the site.

AIR CANADA,  
HEATHROW  
AQ CONS



Air Canada's Heathrow AQ Cons development involved transforming the space into a more open and welcoming environment for both passengers and staff.

Chigwell Window Centre PLC was proud to contribute to this project by supplying and installing striking "ribbons of windows," including building work to open up space for floor-to-ceiling windows.



|                  |   |
|------------------|---|
| Project Value    | £70,000   |
| Project Duration | 1 month   |
| Scope of Works   | Ribbons of windows including building work to open up for floor to ceiling windows for viewing platform |





# ESTELLA ROAD, PORTSMOUTH HAMPSHIRE PO2

Estella Road is a project undertaken with Etec Group. Chigwell Window Centre PLC replaced the existing windows with high-quality tilt and turn units.

|                  |                                  |
|------------------|----------------------------------|
| Project Value    | £340,000                         |
| Project Duration | 6 months                         |
| Scope of Works   | Tilt and turn window replacement |



# MOSSFORD COURT, ILFORD IG6

At Mossford Court in Ilford, Essex, Chigwell Window Centre PLC replaced the existing windows and doors with high-quality aluminium units, complete with aluminium cappings to protect the property but also reduce maintenance, making it a practical and stylish solution for years to come.

|                  |  |
|------------------|--|
| Project Value    | £137,000   |
| Project Duration | 3 months   |
| Scope of Works   | Aluminium windows and doors with aluminium cappings. |





# MARTHAM, GREAT YARMOUTH NR29

For Martham, part of Elemento Group, Chigwell Window Centre PLC provided windows and doors for their new build housing development.



|                  |                                  |
|------------------|----------------------------------|
| Project Value    | £575,000                         |
| Project Duration | Ongoing                          |
| Scope of Works   | Windows and doors for new builds |





# HAREWOOD MEDICAL CENTRE 1 HAREWOOD ROAD, COVENTRY CV5



At Harewood Medical Centre in Coventry, CWC Commercial carried out a full replacement of the windows and doors.

|                  |                               |
|------------------|-------------------------------|
| Project Value    | £72,000                       |
| Project Duration | 3 weeks                       |
| Scope of Works   | Replacement windows and doors |



# FREYA COURT, LEA BRIDGE ROAD, LEYTON E10

|                  |                          |
|------------------|--------------------------|
| Project Value    | £250,000                 |
| Project Duration | 4 months                 |
| Scope of Works   | Windows and bifold doors |

CWC Commercial handled the manufacture and installation at Freya Court, a luxury development comprising 11 apartments located on Lea Bridge Road in Hackney, London. This project, developed by Chigwell Group, offers a blend of contemporary living with access to green spaces, featuring 1, 2 and 3-bedroom apartments.







Chigwell Window Centre Commercial was delighted to have been chosen to supply the specialist windows and doors for the new Treetops School in Grays. The new development has been built on a site adjacent to the current Buxton Road building and is now ready to welcome around 140 students with special needs between 5 and 16 years of age.

|                  |   |
|------------------|---|
| Project Value    | £298,000  |
| Project Duration | 6 months  |
| Scope of Works   | Window and doors to new build school, smart wall doors c/w solar control glazing. |





# TREETOPS SCHOOL,

# GRAYS RM16





PROJECTS AT A GLANCE



4 ROACH ROAD, BOW, LONDON E3



ASHFORD COUNCIL



APPLETREE CRESSING, ESSEX CM77



STONESHOT FARM, NAZEING EN9



LUXBOROUGH LANE, CHIGWELL IG7



CHAPEL RIVERSIDE, SOUTHAMPTON SO14



GEORGE SPICER PRIMARY SCHOOL, EN1



WHITEHALL PRIMARY SCHOOL, E4



GARDINERS CLOSE, BASILDON SS14



PLYMOUTH ROAD, WORCESTER B45



QUEENSGATE, FARNBOROUGH GU14



BAYFORD STREET, HACKNEY E8

WE'RE FULLY ACCREDITED



CWC PLC PARTNERS

